

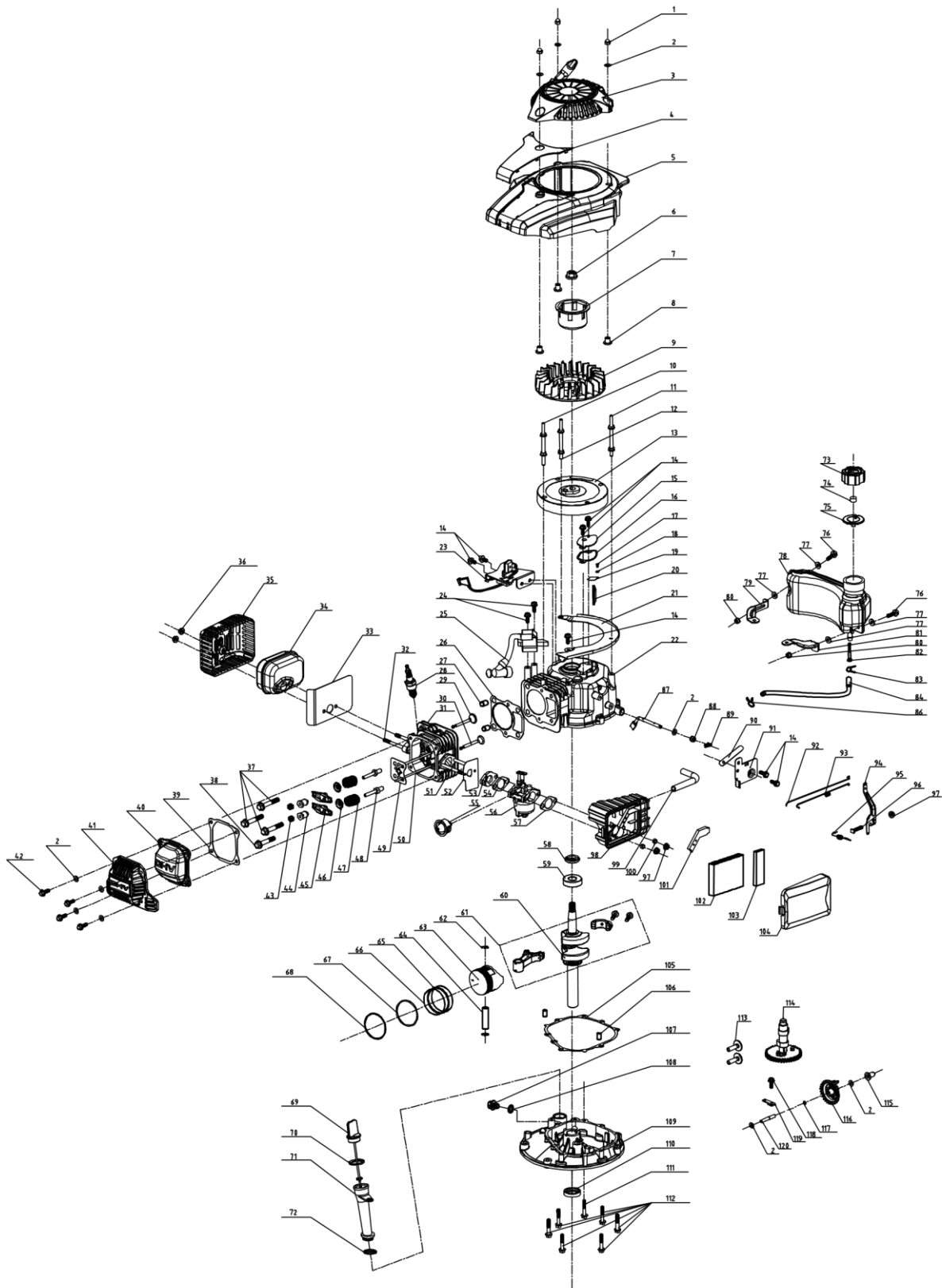
Part No.	Discription in English	Q-ty
1	Foam Pipe	1
2	B Type Self-propelled Lever	1
3	Stop Lever	1
4	B Type Upper Handrail	1
5	Hex Locknut M6/8.8	5
6	Hex Flange Face Bolt	1
7	Cap type NUT	1
8	Rope Guide	1
9	plug for Handrail	2
10	lower Handrail (L)	1
11	Carriage Bolt M8x50/8.8	2
12	Flat Washer(8.5X16X1.5)	2
13	knob	2
14	Hexangular Nut M8/8.8	2
15	lower Handrail(R)	1
16	Fastener	1
17	Cable Fixing Clamp	1
18	protective board for top cover for plastic bag	1
19	top cover for Plastic Bag	1
20	cap nut M5	2
21	Cross Recess Pan Head Tapping Screw M5X10	2
22	Lower Cover of Plastic Bag	1
23	Cross Recess Pan Head Tapping Screw ST/3.5X18	6
24	Shaft for Discharge Cover	1
25	Baffle	1
26	spring for Discharge Cover	1
27	Rear Discharge Cover	1

28	Mulching Plug	1
29	Rear Baffle	1
30	Cross Recess Pan Head Tapping Screw	8
31	Brake Cable	1
32	Self-propelled Cable	1
33	Hex Flange Face Bolt	2
34	height adjustment ball	1
35	Flexible Washer	1
36	Transmission Assy	1
37	height adjustment	1
38	Self-propelled Spring	1
39	right board	1
40	Transmission Assy	1
41	Washer	2
42	Inner Cover for A Type 7" Wheel Hub	2
43	Punching Bearing	4
44	II Type Hex Locknut M4	4
45	Big Washer	4
46	Big Straight Gear	2
47	7" Wheel Assy	2
48	Small Washer	4
49	Flexible Washer	4
50	Outside Cover for 7" Wheel Hub	4
51	Small Straight Gear(Ratchet Wheel R)	1

52		2
53	Small Straight Gear(Ratchet Wheel L)	1
54	Pin	2
55	Ratchet Wheel Washer	2
56	Rear drive shaft socket	2
57	left board	1
58	Split Pin	2
59	Height Adjustment Pull Rod	1
60	deck assy	1
61	Hex Flange Face Bolt	1
62	Hex Flange Face Bolt	6
63	V Type Belt	1
64	Small Belt Wheel	1
65	Belt Cover	1
66	Long Key for Crankshaft	1
67	Washer for Blade Adapter	1
68	Bush for Belt Cover	2
69	Blade Adapter	1
70	17" Blade	1
71	Blade Washer	1
72	Hex Flange Face Bolt	1
73	front drive assy	1
74	6 inch A type wheel assy	2
75	Washer	2

76	Hex Flange Face Bolt	2
77	T100 Engine	1
78	Hex Flange Face nut	2

00001008661



no.	english description	Qty
1	Cap nut	3
2	Gasket	10
3	starter assy.	1
4	decoration board	1
5	Blower Housing	1
6	Hex flange nuts	1
7	starter hub	1
8	Blower Housing Bush	3
9	fan	1
10	Special bolt I	1
11	Special bolt II	1
12	Special bolt III	1
13	flywheel assy	1
14	Bolt	7
15	Respirator Cover Plate Assy	1
16		1
17	boss recessed small Pan head screw	1
18	spring washer	1
19	respirator spring steel valve element	1
20	oil filter net	1
21	Blower board	1
22	crankshaft box assy.	1

23	detent assy.	1
24	Bolt	2
25	ignition assy.	1
26		1
27	spacing pin	2
28	spark plug	1
29	IntakeValve	1
30	Exhaust Valve	1
31	cylinder head assy.	1
32	Dual-head bolts	2
33		1
34	muffler assy.	1
35	muffler cover assy.	1
36	Self-locking nut	2
37	locking bolt	3
38	locking bolt	1
39		1
40	cylinder head cover	1
41	cylinder head cover	1
42	Bolt	4
43	And nuts	2
44	Valve adjustment nut	2
45	Rocker of Valve	2
46	Spring Coil of Intake Valve	2

47	valve spring	2
48	valve rocker arm support bolts	2
49	push rod director plate	1
50	push rod	2
51	Dual-head bolts	2
52		1
53	Air Inlet Pipe	1
54		1
55	prime button II	1
56	carburetor assy.	1
57		1
58	oil seal	1
59	rolling bearing	1
60	crankshaft assy.	1
61	connecting rod assy.	1
62	Piston Pin circlip	2
63	Piston	1
64	piston pin	1
65	Bushing Ring	1
66	Guide Rail	2
67	Piston Ring II	1
68	Piston Ring I	1
69	Lubricating Gauge Assy	1
70		1
71	inlet fuel pipe	1

72		1
73	fuel tank cap	1
74	fuel tank cap sponge	1
75	Fuel Tank Cap seal gasket	1
76	Bolt	2
77	Cushion Blocking gasket	4
78	fuel tank body	1
79	right bracket of fuel tank	1
80	Self-locking nut	2
81	left bracket of fuel tank	1
82		1
83	fuel pipe lock clamp I	1
84	inlet fuel pipe	1
86	fuel pipe lock clamp II	1
87	rate-limiting rocker arm shaft	1
88	oil seal	1
89	R type pin	1
90	clip	1
91	single phrase throttle assy.	1
92	Handspike of Valve	1
93	valve spring	1
94	throttle rocker arm	1
95	valve spring	1
96	bolt	1

97	Hex flange nuts	3
98	Air Filter Pedestal	1
99	waste pipe	1
100	air fiiler bush	2
101	Exhaust Gas Cover Board	1
102		1
103		1
104	Air Filter Upper Cover	1
105		1
106	spacing pin	2
107	Oil drain bolt	1
108	Oil drain bolt gasket	1
109	Crank box cover	1
110	oil seal	1
111	Bolt	1
112	Bolt	6
113	pin	2
114	nynon camshaft assy.	1
115	Sliding Sleeve	1
116	rete-limiting gear assy.	1
117	Gear Shaft circlip	1
118	Bolt	1
119	rate-limiting gear shaft clamp	1
120	rate-limiting gear shaft	1